



## Adobe Joint Enterprise License Agreement

### Installation Guidelines

Adobe Live Cycle Designer



#### **LiveCycle Designer 11 (also referred to as Designer ES4)**

Adobe® LiveCycle® Designer ES4 software helps you easily author form and document templates that combine dynamic presentation with sophisticated XML data handling. LiveCycle Designer ES4 also lets you create form templates that you can output to paper, PDF, and HTML5 without having to write scripts. Advanced layout capabilities let you preserve the appearance of imported PDF documents, while spell-check and customizable user dictionaries reduce the chance of errors.

#### **Advanced Features:**

##### *Create streamlined business logic*

Development teams can work collaboratively to create and preview templates, bind schema-compliant XML data to back-end systems, and ensure that forms and processes are working together efficiently. For forms requiring more complex business logic, LiveCycle Designer ES4 provides a scripting capability. Quickly find and correct errors by checking the syntax of FormCalc and JavaScript code.

##### *Enjoy sophisticated data capture*

Employ a comprehensive set of data capture fields such as dynamic tables, barcodes, and comb fields. Integrate forms with core business systems by using advanced data binding to XML schemas, web services, databases, and XML data files.

##### *Improve efficiency with form fragments*

You can quickly and easily create new forms by leveraging form fragments, which are collections of fields or objects such as an address block. Form fragments also make it possible to rapidly update large form collections. Form fragments are stored in a file system or in the LiveCycle repository and are referenced by XML templates, so whenever a fragment is updated, the templates that reference it are automatically updated, saving significant development time.

#### **Help and Guidance:**

Topics on Adobe.com cover a variety of topics to assist in your use of the Designer tool such as: Quick Start Tutorials, Designing Forms for Output, Designer Samples, Scripting Basics and Dynamically Assembling Forms and Documents.

For detailed help with LiveCycle Designer, visit the Adobe support page at:

<https://helpx.adobe.com/livecycle/topics/livecycle-designer.html>

# Adobe JELA LiveCycle Designer 11 – ES4 Installation Guidelines

## Table of Contents

Installation instructions:.....	3
1. Serial Key Provisions .....	3
2. File Name and Versioning.....	3
3. Traditional Installation .....	3
4. Bulk installation, silent installs, push via SCCM.....	6
Appendix A .....	7



## Installation instructions:

### 1. Serial Key Provisions

1.1 Installation of this software will require a serial number. The serial key will be distributed only to those authorized to access and download software from the Adobe portal.

1.2 As this access key is considered part of a controlled inventory, it is under strict control and to be used only by Army Trusted Agents or SysAdmin personnel. A copy of the Trusted Agent application that each Army TA must have on file at CHESS is provided at Appendix A. This agreement outlines the responsibilities of the TA, based on the foundation that they “comply and adhere to the accountability and sustainability of Army owned products and services in support of Enterprise License and Maintenance Agreements.” The same level of trust is applicable to assigned SysAdmin personnel who are provided license keys to redistribute / install software.

1.3 Once a request has been placed, an email containing license instructions will be provided to the email address on file, and an annotation made in the database of who the keys were distributed to.

### 2. File Name and Versioning

2.1 In order to manage version control over software on the Adobe JELA contract, software installation files are labeled using a naming convention. It is important to keep this same file name during install, to both ensure the file installs correctly and to identify versioning in the event any errors occur during to or following installation.

2.2 The Adobe JELA version of Designer 11 is a compressed (zipped) file named: **Ar-LC-Designer-11-ES4-2015-Jul.zip**

### 3. Traditional Installation

3.1 To complete a traditional install of the software:

3.1.1 Copy the zipped file to a file directory on the user’s machine.

3.1.2 Extract the contents of the zipped file to that directory where the file was originally saved. The resulting folder will contain a folder named “Designer” and two readme files.

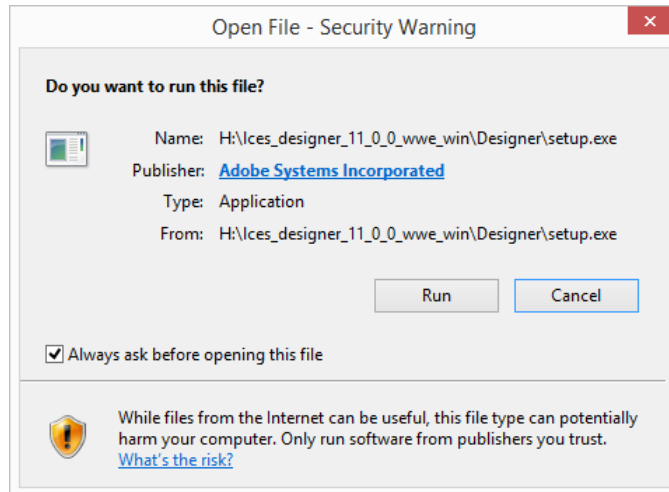
- BeforeInstall.htm contains an overview of system requirements and pre-requisites for installation. One of the basic requirements is to have a minimum of Acrobat Reader 9 or later installed. Since Adobe JELA customers are granted unlimited access to Acrobat Pro XI and later, it is highly recommended that the end user installing Designer 11 have at least Acrobat Pro XI on their system. Using Designer with Acrobat Pro XI provides additional functionality that is not supported by earlier versions of Acrobat or Adobe Reader.
- Readme.htm contains copyright information and a link to additional release notes for Designer.

3.1.3 Open the “Designer” sub folder.



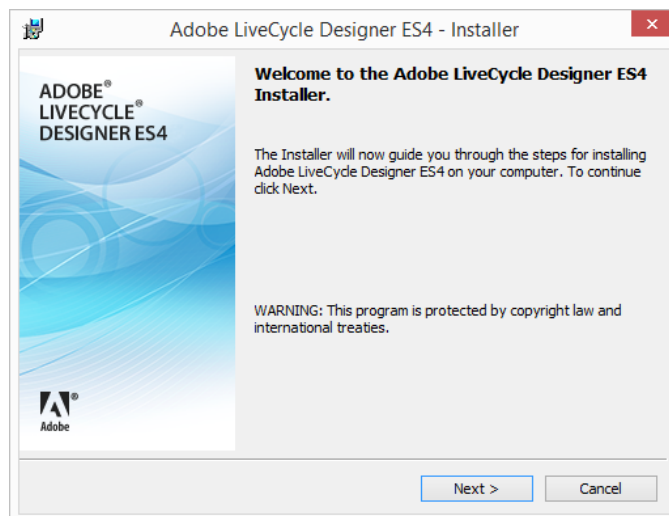
3.1.4 Double-click on the “Setup.exe” file.

3.1.5 You may be prompted with a Windows system or “Open File Security Warning” box similar to the following prompt:



- If you are prompted with this window, proceed with the installation by clicking the “Run” button.

3.1.6 The next prompt you will see is the LiveCycle Designer installer:

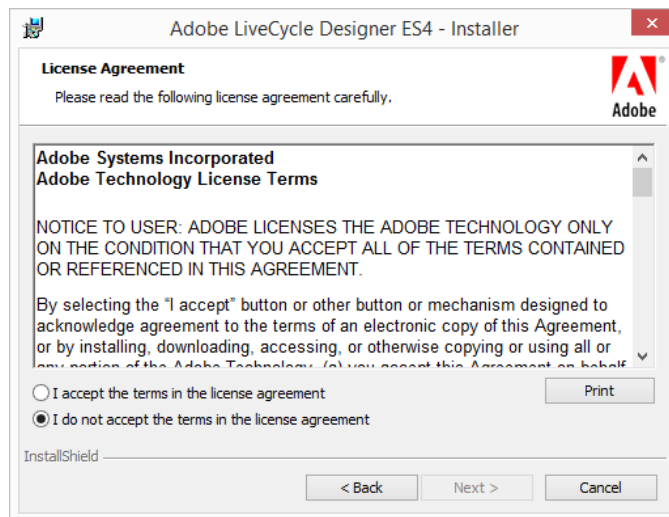


3.1.7 Click the “Next” button to continue with the installation.

- The resulting box will prompt you for a User Name and Serial Number.
- The user name and organization should correspond to the details specific to the end user who will be using the application.

- The serial number to use will be provided to the Trusted Agent / authorized SysAdmin Installer via email at the time the request was placed on the Adobe Portal.
- If you did not receive a serial number, please contact your Trusted Agent for more details.
- If you are a Trusted Agent and need support, please send an email to [adobe-jela@carahsoft.com](mailto:adobe-jela@carahsoft.com). Include in your email that you are installing LiveCycle Designer and are requesting a license key to complete an installation.

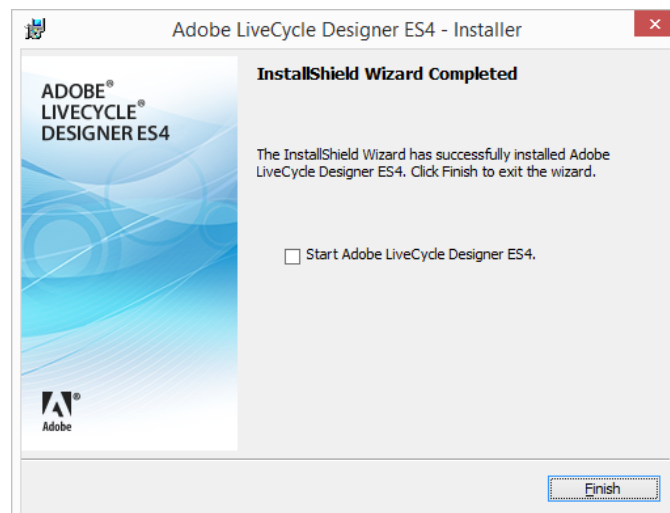
3.1.8 Once you've entered your serial number and clicked "next" you will receive the following prompt:



3.1.9 Select the radio button to accept the license agreement and click "next" to continue.

3.1.10 You will be prompted to choose an installation location next. Recommended action is to accept the default installation path and click "next" to continue.

3.1.11 At this point, you will begin the installation of the Designer application. A progress window will be displayed. Upon a successful install, the following final window should appear:



3.1.12 You can now begin using LiveCycle Designer on your system.

## 4. Bulk installation, silent installs, push via SCCM

4.1 For other than traditional direct end user install, Adobe also provides a command line installation option.

4.1.1 Download the *Ar-LC-Designer-11-ES4-2015-Jul.zip* file to a directory from which you intend to execute the bulk install.

4.1.2 Extract the contents of the zipped file.

4.1.3 Open the “Designer” subfolder from the extracted file contents.

- Within the Designer folder, ensure the “Designer.msi” file is present.

4.1.4 You have the option of running a passive or a silent install at this point. The command line input and syntax to use are as follows:

- Passive command line install. For a passive display option, the installer displays a progress bar that indicates that an installation is in progress but no prompts or error messages are displayed to the user. Once launched, you will not be able to cancel the installation. Use of the “norestart” command ensures that the installer does not restart the computer after installation.

```
msiexec /i "<path>\Designer.msi" /passive /norestart  
SERIALNUMBER=****_****_****_****_****_****
```

- Silent command line install. For the quiet display option, the installer runs your installation without displaying a user interface. No prompts, messages, or dialog boxes are displayed. Once launched, you will not be able to cancel the installation.

```
msiexec /i "<path>\Designer.msi" /quiet /norestart  
SERIALNUMBER=****_****_****_****_****_****
```

4.1.5 For install through the use of existing SCCM tools please refer to your configuration manager or standard SCCM methods to install. LiveCycle Designer installation provides an “.msi” file that should be compatible with MSI package deployment from a shared network resource / directory.



## Appendix A

### Army Trusted Agent Application

